
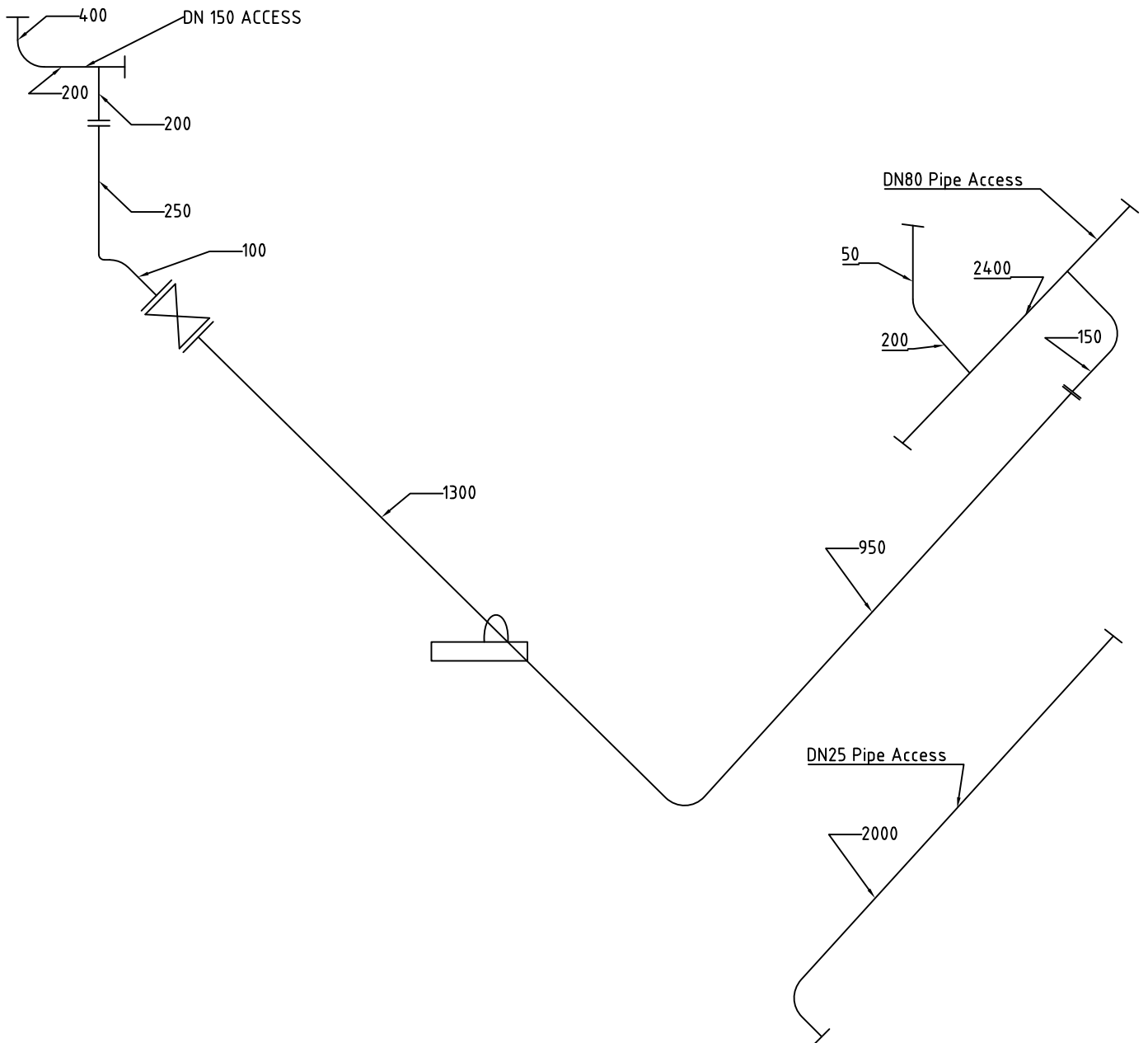

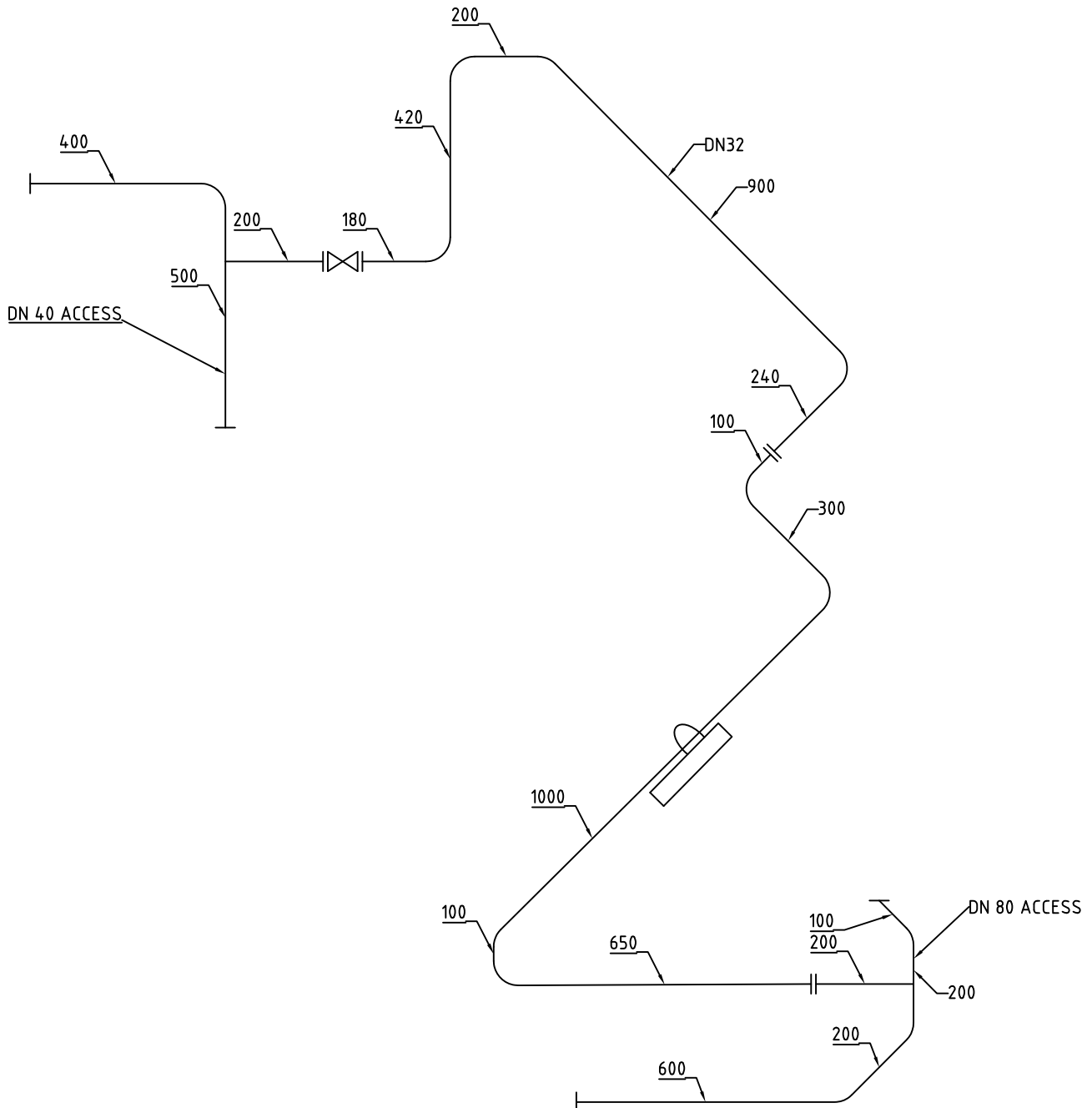



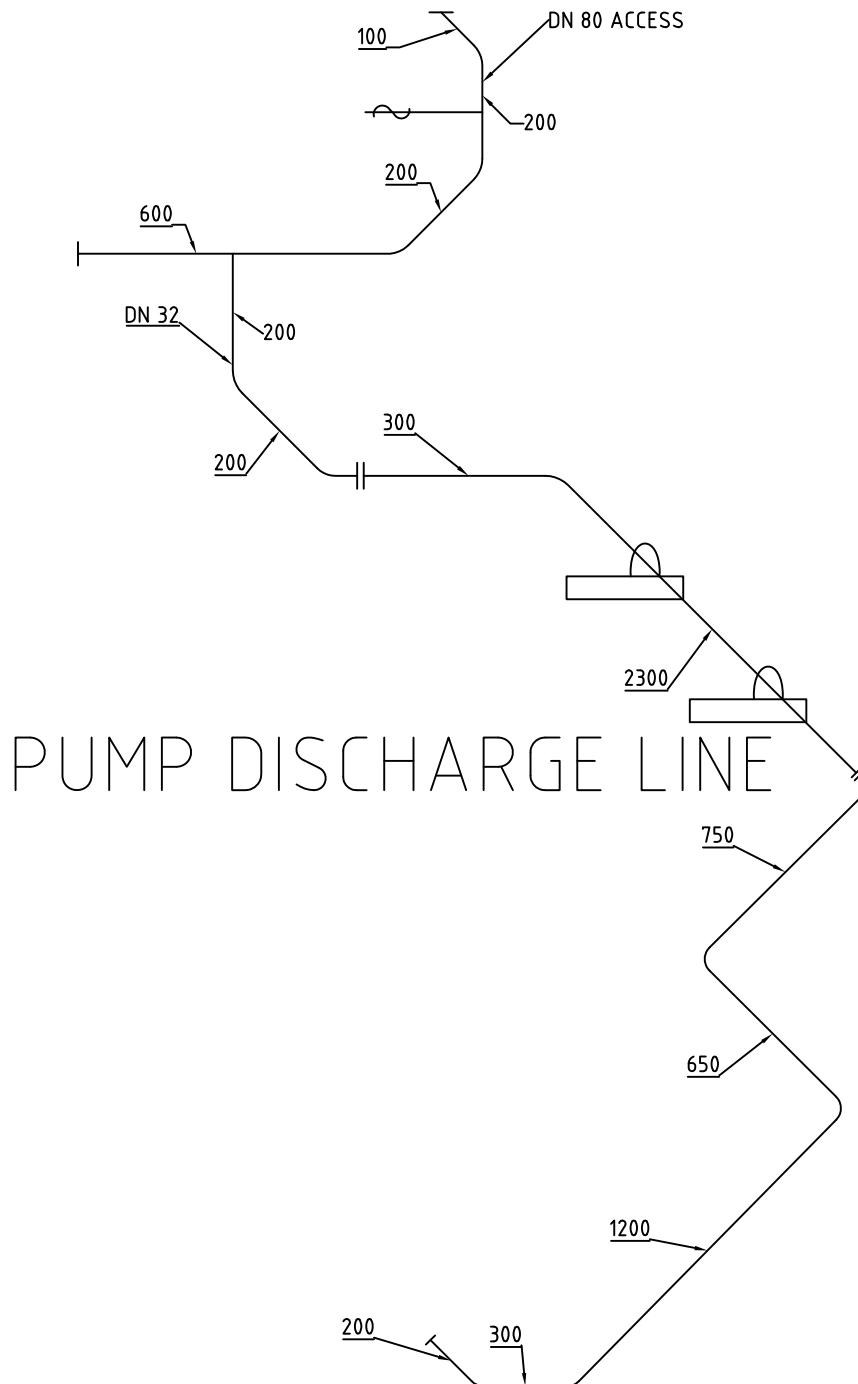
Dwg No: YK-TEAL-P-001		Revision: 0		Quantity(pcs): 1	Weight(kg): -	Page No:	
Ref. dwg No:		0		1	-		
Materials			Pcs.	Iden No:		LOCATION: Engine Room	
Pipe							
Pipe (3") Sch40 ST 37 DIN 2448 L=9700mm			X 1				
Pipe (1") Sch40 ST 37 DIN 2448 L=2000mm			X 1			FABRICATION: Onboard & Workshop	
Elbow						New Low Sulphur Line Modification	
Elbow 3" Sch40 90° 1.5 D ST 37 ANSI B 16.9 -			X 4				
Reducer							
Flange							
Flange 3" Sch40 90° 1.5 D ST 37 ANSI B 16.9 -			X 6				
Others							
DN80 Valve Access			X 3				
U BOLT DN80 M16 DIN 3570 GALV. + Foundation			X 2				
Drawn:	Control:	Date:	Ship/Project No:	Work Order No:	Test Pressure:	Test Ambient:	Treatment After Production:
FARUK AVCIOGLU NAVAL ARC.&MARINE ENG.	FARUK AVCIOGLU NAVAL ARC.&MARINE ENG.	16.12.2014	MV	1	4 BARS	HYDRAUSTATIC	-




Dwg No: YK-TEAL-P-002		Revision		Quantity(pcs)		Weight(kg)		Page No:	
Ref. dwg No:		0		1		-			
Materials				Pcs.	Iden No:		LOCATION		
Pipe						Engine Room			
Pipe (1 1/4") Sch40 ST 37 DIN 2448 L=12000mm				X	1				
Pipe (1 1/2") Sch40 ST 37 DIN 2448 L=2000mm - access				X	1				
Pipe (3") Sch40 ST 37 DIN 2448 L=3000mm - access				X	1				
Elbow									
Elbow 3" Sch40 90° 1.5 D ST 37 ANSI B 16.9 -				X	8				
Reducer									
Flange						FABRICATION		Onboard & Workshop	
Flange 1 1/4" Sch40 90° 1.5 D ST 37 ANSI B 16.9 -				X	6				
Others						New Low Sulphur Line Modification			
DN80 Valve Access				X	3				
U BOLT DN80 M16 DIN 3570 GALV. + Foundation				X	2				
Drawn:	Control:	Date:	Ship/Project No:	Work Order No:	Test Pressure:	Test Ambient:	Treatment After Production:		
FARUK AVCIOGLU NAVAL ARC.&MARINE ENG.	FARUK AVCIOGLU NAVAL ARC.&MARINE ENG.	16.12.2014	MV	1	4 BARS	HYDRAUSTATIC	-		



Dwg No: YK-TEAL-P-003		Revision		Quantity(pcs)		Weight(kg)		Page No:	
Ref. dwg No:		0		1		-			
Materials			Pcs.	Iden No:		LOCATION			
Pipe					Engine Room				
Pipe (1 1/4") Sch40 ST 37 DIN 2448 L=11900mm			X	1					
Pipe (1 1/2") Sch40 ST 37 DIN 2448 L=2000mm									
Elbow					FABRICATION				
Elbow 1 1/4" Sch40 90° 1.5 D ST 37 ANSI B 16.9 -			X	8		Onboard & Workshop			
Reducer									
Flange									
Flange 1 1/4" Sch40 90° 1.5 D ST 37 ANSI B 16.9 -			X	5					
Others									
DN80 Pipe Access - 3000 mm			X	1		New Low Sulphur Line Modification			
Drawn:	Control:	Date:	Ship/Project No:	Work Order No:	Test Pressure:	Test Ambient:	Treatment After Production:		
FARUK AVCIOGLU NAVAL ARC.&MARINE ENG.	FARUK AVCIOGLU NAVAL ARC.&MARINE ENG.	16.12.2014	MV	1	4 BARS	HYDRAUSTATIC	-		



Dwg No: YK-TEAL-P-003		Revision: 0		Quantity(pcs): 1	Weight(kg): -	Page No:	
Ref. dwg No:		0					
Materials				Pcs.	Iden No:	LOCATION: Engine Room	
Pipe							
Pipe (1 1/4" Sch40 ST 37 DIN 2448 L=32100mm)				X	1		
Pipe (1 1/2" Sch40 ST 37 DIN 2448 L=2000mm)						FABRICATION: Onboard & Workshop	
Elbow						New Low Sulphur Line Modification	
Elbow 1 1/4" Sch40 90° 1.5 D ST 37 ANSI B 16.9 -				X	15		
Reducer							
Flange							
Flange 1 1/4" Sch40 90° 1.5 D ST 37 ANSI B 16.9 -				X	24		
Others							
DN25 Pipe Access - 2000 mm				X	1		
U BOLT DN32 M16 DIN 3570 GALV. + Foundation				X	6		
Drawn:	Control:	Date:	Ship/Project No:	Work Order No.:	Test Pressure:	Test Ambient:	Treatment After Production:
FARUK AVCIOGLU NAVAL ARC.&MARINE ENG.	FARUK AVCIOGLU NAVAL ARC.&MARINE ENG.	16.12.2014	MV	1	4 BARS	HYDRAUSTATIC	-

PUMP DISCHARGE LINE

