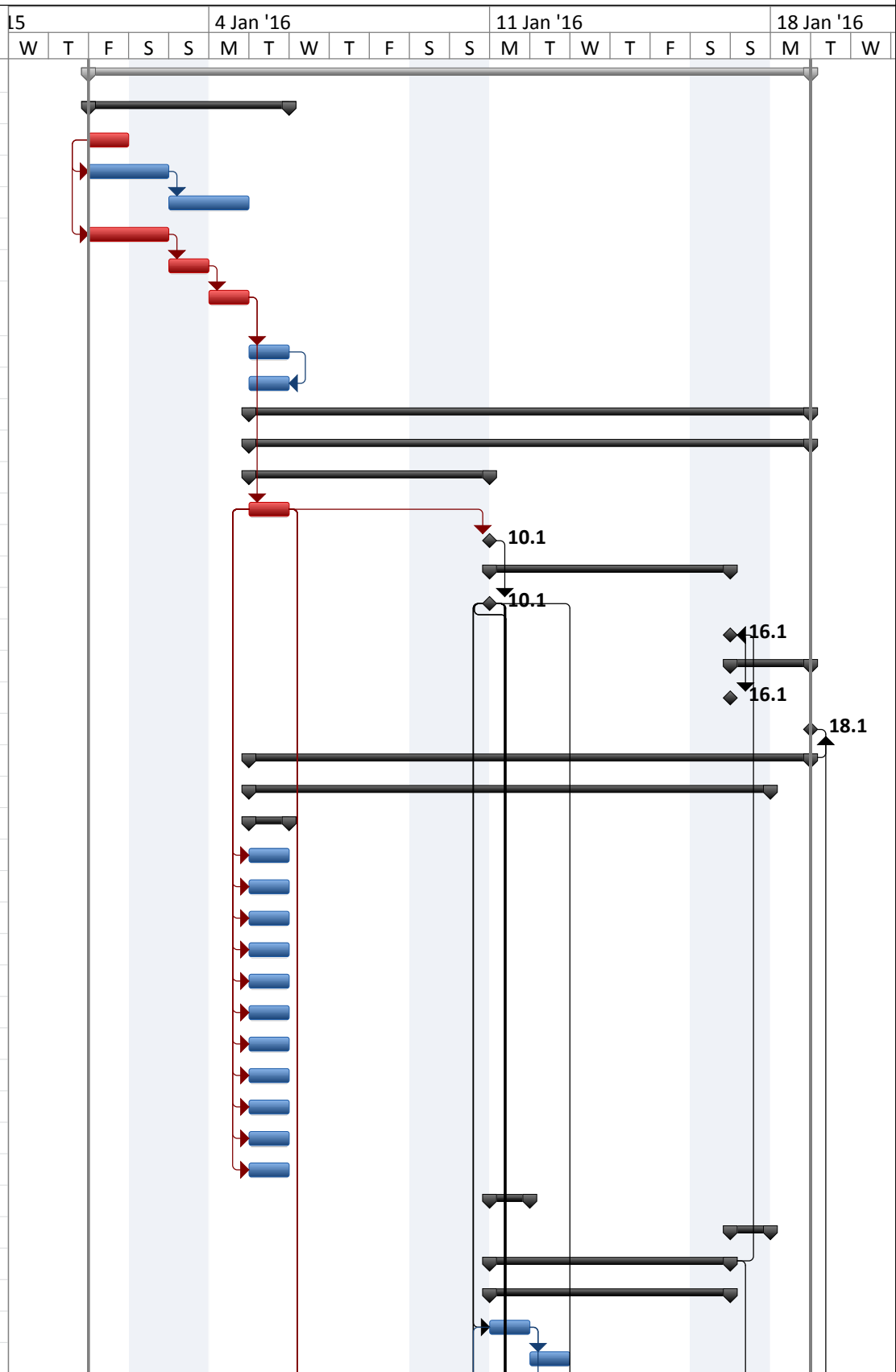


ID	Total Slack	Task Mode	Task Name	Duration	Start	Finish	Predecessors	4 Jan '16							11 Jan '16							18 Jan '16								
								W	T	F	S	S	M	T	W	T	F	S	S	M	T	W	T	F	S	S	M	T	W	
0	0 days		MV "....." Repair Plan	18 days	1.1.16 08:00	18.1.16 17:00																								
1	0 days		Initial preparations for vessel repair and dockings	5 days	1.1.16 08:00	5.1.16 17:00																								
2	0 days		Confirmation of ship repair project both yard and shipowner side	1 day	1.1.16 08:00	1.1.16 17:00																								
3	14 days		Supply of vessel plans from shipowner	2 days	1.1.16 08:00	2.1.16 17:00	2SS																							
4	14 days		Arrangement of keel blocks as per ship plans and dock condition	2 days	3.1.16 08:00	4.1.16 17:00	3																							
5	0 days		Team arrangements for vessel according to work scope	2 days	1.1.16 08:00	2.1.16 17:00	2SS																							
6	0 days		Preparing of initial repair plan for repair project	1 day	3.1.16 08:00	3.1.16 17:00	5																							
7	0 days		Initial repair meeting with shipowner to clarify existing work scope items one by one (For job cancellation and additional work requests)	1 day	4.1.16 08:00	4.1.16 17:00	6																							
8	13 days		Updating of initial repair plan after ship owner meeting	1 day	5.1.16 08:00	5.1.16 17:00	7																							
9	13 days		Other preparations	1 day	5.1.16 08:00	5.1.16 17:00	8FF																							
10	0 days		MV "....." REPAIR PERIOD	14 days	5.1.16 08:00	18.1.16 17:00																								
11	0 days		Berthing and Docking Periods	14 days	5.1.16 08:00	18.1.16 17:00																								
12	0 days		Initial Berthing Period	6 days	5.1.16 08:00	10.1.16 17:00																								
13	0 days		Arrival of the vessel	1 day	5.1.16 08:00	5.1.16 17:00	7																							
14	0 days		Shifting operation for docking	0 days	10.1.16 17:00	10.1.16 17:00	13FS+5 days																							
15	0 days		Docking Period	6 days	10.1.16 17:00	16.1.16 17:00																								
16	0 days		Docking of the vessel	0 days	10.1.16 17:00	10.1.16 17:00	14																							
17	1 day		Undocking of the vessel	0 days	16.1.16 17:00	16.1.16 17:00	53FF																							
18	0 days		Second Berthing Period	2 days	16.1.16 17:00	18.1.16 17:00																								
19	4,88 days		Berthing of the vessel	0 days	16.1.16 17:00	16.1.16 17:00	17																							
20	0 days		Departure of the vessel	0 days	18.1.16 17:00	18.1.16 17:00	21																							
21	0 days		Repair Work From Initial Contract	14 days	5.1.16 08:00	18.1.16 17:00																								
22	1 day		General Works	13 days	5.1.16 08:00	17.1.16 17:00																								
23	13 days		General services after vessel arrival	1 day	5.1.16 08:00	5.1.16 17:00																								
24	13 days		Installation of gangways	1 day	5.1.16 08:00	5.1.16 17:00	13SS																							
25	13 days		Fire line connection	1 day	5.1.16 08:00	5.1.16 17:00	13SS																							
26	13 days		Electric connection	1 day	5.1.16 08:00	5.1.16 17:00	13SS																							
27	13 days		O2 connections on deck	1 day	5.1.16 08:00	5.1.16 17:00	13SS																							
28	13 days		Transferring of repair equipments	1 day	5.1.16 08:00	5.1.16 17:00	13SS																							
29	13 days		Compressed air connection on main deck	1 day	5.1.16 08:00	5.1.16 17:00	13SS																							
30	13 days		Transportation of garbage bins on board	1 day	5.1.16 08:00	5.1.16 17:00	13SS																							
31	13 days		Electrical panel connection	1 day	5.1.16 08:00	5.1.16 17:00	13SS																							
32	13 days		Fresh water & cooling water connections (if needed)	1 day	5.1.16 08:00	5.1.16 17:00	13SS																							
33	13 days		Sewage line connection	1 day	5.1.16 08:00	5.1.16 17:00	13SS																							
34	13 days		Internet and emergency phone connections	1 day	5.1.16 08:00	5.1.16 17:00	13SS																							
35	7 days		General services for docking period	1 day	11.1.16 08:00	11.1.16 17:00																								
44	1 day		General services during the second berthing period	1 day	17.1.16 08:00	17.1.16 17:00																								
53	1 day		Docking Works	6 days	10.1.16 17:00	16.1.16 17:00																								
54	1 day		Anchor and Chain Works	6 days	11.1.16 08:00	16.1.16 17:00																								
55	1 day		Laying of the chains (PS & STBD)	1 day	11.1.16 08:00	11.1.16 17:00	16SS																							
56	5 days		Opening of bitter ends (if needed)	1 day	12.1.16 08:00	12.1.16 17:00	55																							



Project: MV "....."
Date: 8.7.15 00:33

Task		Project Summary		Inactive Milestone		Manual Summary Rollup		Deadline	
Split		External Tasks		Inactive Summary		Manual Summary		Critical	
Milestone		External Milestone		Manual Task		Start-only		Critical Split	
Summary		Inactive Task		Duration-only		Finish-only		Progress	

